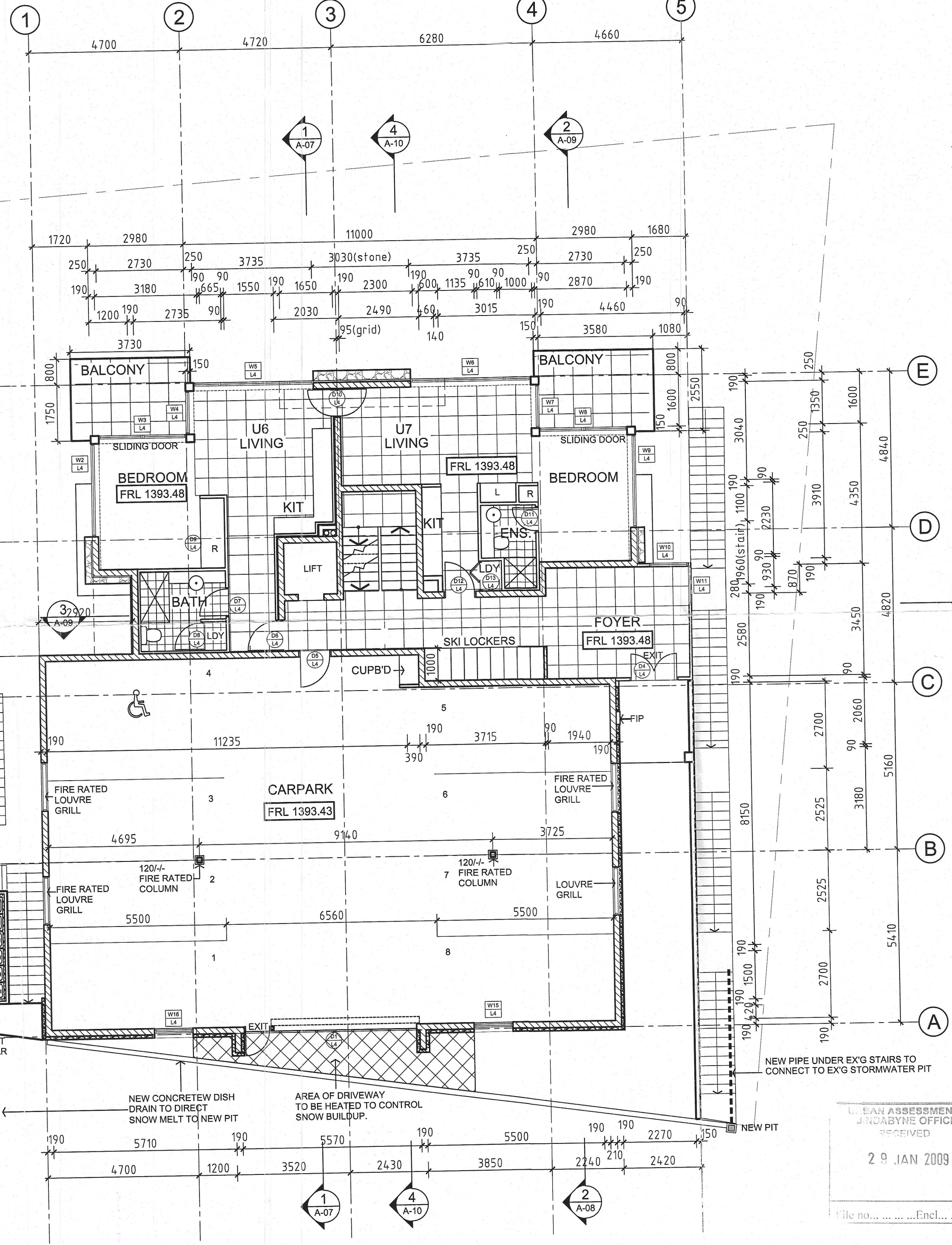


LEVEL 3 FLOOR PLAN

NSW GOVERNMENT
Department of Planning
Issued under the Environmental Planning and Assessment Act 1979
Approved Development Application No. ...
Granted on the ... subject to any conditions contained in the notice of determination.
Signed: ... Date: ...
Sheet No. ... of ... DA

NSW GOVERNMENT
Department of Planning
Issued under the Environmental Planning and Assessment Act 1979
Approved Section 96 (1A) modification application.
No. 72-12-2008 granted on the 4/3/09
in respect to DA No. 16-3-2007 subject to any conditions contained in the notice of determination.
Signed: ... Date: 6/3/09
Sheet No. 2 of 5 MOD



LEVEL 4 FLOOR PLAN

25	28.01.09	RE-ISSUED FOR AMENDED DEV. CONSENT
24	02.12.08	ISSUED FOR AMENDED DEVELOPMENT CONSENT
23	20.11.08	ISSUED FOR REVIEW
22	14.11.08	ISSUED FOR REVIEW
21	22.10.08	ISSUED FOR REVIEW
20	28.09.08	ISSUED FOR REVIEW
19	31.03.08	FLOOR LVL AMENDED, MATCH AS CONSTRUCT.
18	10.01.08	NOTE AMENDED
17	20.12.07	ISSUED CONSTRUCTION CERTIFICATION
16	09.11.07	ISSUED FOR REVIEW
15	30.10.07	ISSUED FOR REVIEW
14	24.10.07	ISSUED FOR REVIEW
13	14.08.07	ISSUED FOR REVIEW
12	03.08.07	ISSUED FOR REVIEW
11	25.07.07	ISSUED FOR REVIEW
10	28.02.07	ISSUED FOR DEVELOPMENT CONSENT
9	22.02.07	ISSUED FOR REVIEW
8	20.02.07	ISSUED FOR REVIEW
7	14.02.07	PRELIMINARY - ISSUED FOR REVIEW
6	05.02.07	ISSUED FOR REVIEW
5	22.01.07	ISSUED FOR REVIEW
4	12.01.07	ISSUED FOR REVIEW
3	11.01.07	ISSUED FOR REVIEW
2	21.12.06	ISSUED FOR REVIEW
1	20.12.06	ISSUED FOR REVIEW
No	Date	Revision

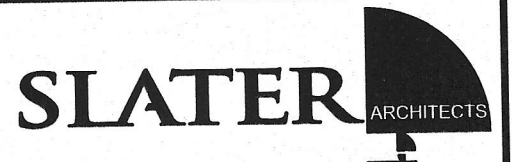
Amendments
Project
PART. DEMOLITION OF 'NEW KIRK LODGE'
AND CONSTRUCTION A NEW
RESIDENTIAL FLAT BUILDING

Location
'NEW KIRK LODGE'
LOT 53 BOBUCK LANE
THREDBO. N.S.W.

Client
JAKESAM PTY.LTD.
OXLEY HILL PTY.LTD.
LAPENE PTY.LTD.

Drawing
FLOOR PLANS

CLEAN ASSESSMENTS
SYDNEY OFFICE
RECEIVED
29 JAN 2009



Plan2000 Pty.Ltd. Trading as Slater Architects ABN24001 954 392
P.O.Box 552, Terrigal, N.S.W. 2260
Suite 5/203 The Entrance Road, Erina, 2250
ph 02 43654458 fax. 02 43652856
email: info@slaterarchitects.com.au
Catherine Slater - Registered Architect No. 7153

These drawings & designs are the property of Slater Architects & shall not be reproduced in whole or part without the written consent of Slater Architects	
Designed by	North
Scale	1:100 @ A1
Drawn by	Date
MC	NOVEMBER 2008
Checked	Revision no.
	25
Job no.	Sheet no.
13634	A04

